



PRIMĂRIA MUNICIPIULUI TIMIȘOARA  
 Biroul Banca de Date Urbană  
 Extras din planul de bază al municipiului  
 ca referință pentru lucrări în continuare  
 scara 1:1000  
 EDITIE 2015  
 Data 16.10.2017

Inventar de coordonate puncte

Nr. cad. 446756 Timisoara

$$2S = \sum N_i (E_{i+1} - E_i)$$

$$S = 4920mp$$

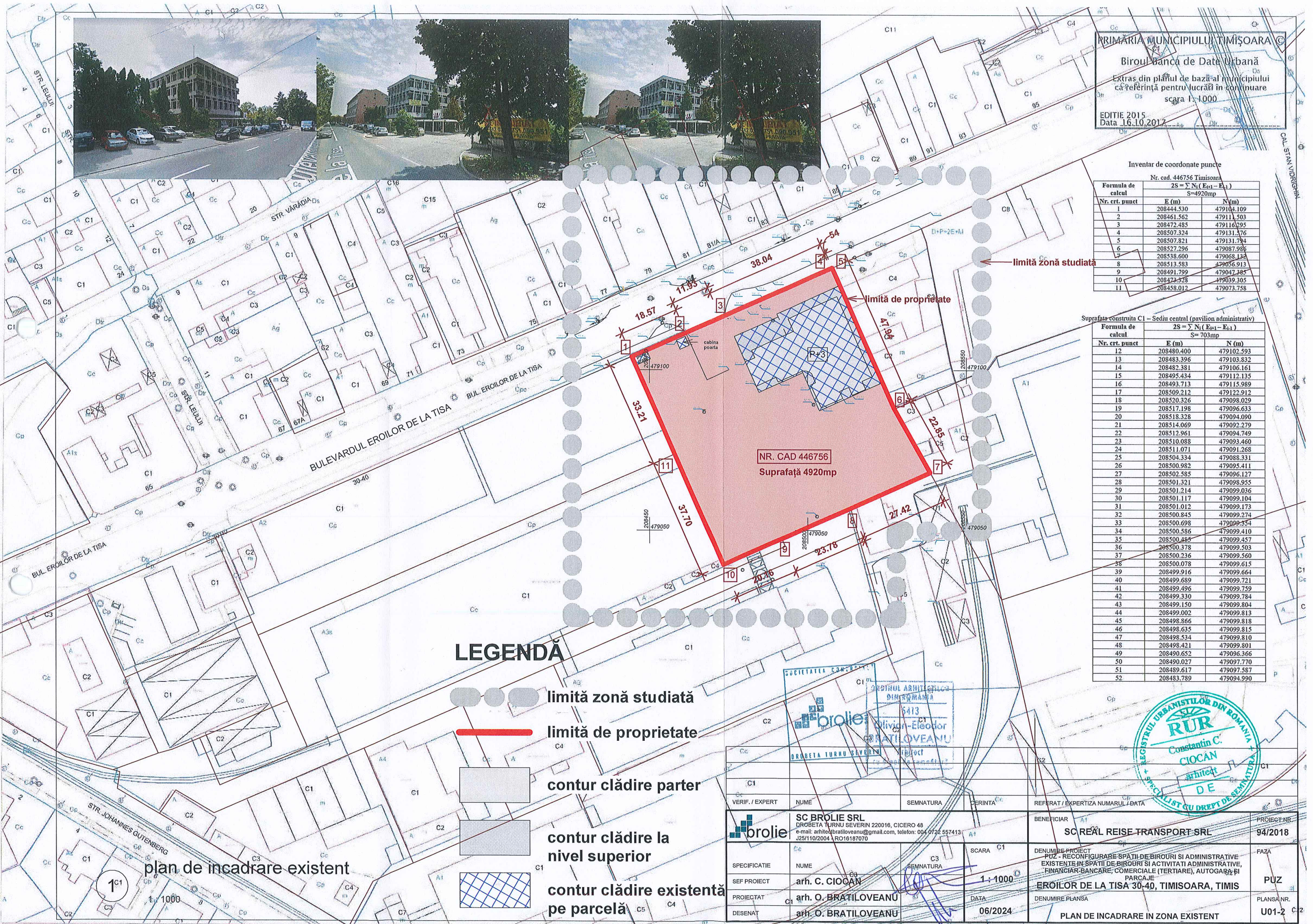
Nr. crt. punct	E (m)	N (m)
1	208444.530	479104.109
2	208461.562	479111.503
3	208472.485	479116.295
4	208507.324	479131.476
5	208507.821	479131.794
6	208527.296	479087.987
7	208538.600	479068.134
8	208513.583	479056.913
9	208491.799	479047.285
10	208474.328	479039.305
11	208458.012	479073.758

Suprafata construita C1 - Sediu central (pavilion administrativ)

$$2S = \sum N_i (E_{i+1} - E_i)$$


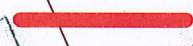



$$S = 703mp$$

Nr. crt. punct	E (m)	N (m)
12	208480.400	479102.593
13	208483.396	479103.832
14	208482.381	479106.161
15	208495.434	479112.135
16	208493.713	479115.989
17	208509.212	479122.912
18	208520.326	479098.029
19	208517.198	479096.633
20	208518.328	479094.090
21	208514.069	479092.279
22	208512.961	479094.749
23	208510.088	479093.460
24	208511.071	479091.268
25	208504.334	479088.331
26	208500.982	479095.411
27	208502.585	479096.127
28	208501.321	479098.955
29	208501.214	479099.036
30	208501.117	479099.104
31	208501.012	479099.173
32	208500.845	479099.274
33	208500.698	479099.354
34	208500.586	479099.410
35	208500.488	479099.457
36	208500.378	479099.503
37	208500.236	479099.560
38	208500.078	479099.615
39	208499.916	479099.664
40	208499.689	479099.721
41	208499.496	479099.759
42	208499.330	479099.784
43	208499.150	479099.804
44	208499.002	479099.813
45	208498.866	479099.818
46	208498.635	479099.815
47	208498.534	479099.810
48	208498.421	479099.801
49	208490.652	479096.366
50	208490.027	479097.770
51	208489.617	479097.587
52	208483.789	479094.990



NR. CAD 446756  
 Suprafata 4920mp

**LEGENDA**

-  limită zonă studiată
-  limită de proprietate
-  contur clădire parter
-  contur clădire la nivel superior
-  contur clădire existentă pe parcelă

plan de incadrare existent

**SC BROLIE SRL**  
 DROBETA TURNU SEVERIN 220016, CICERO 48  
 e-mail: arhitec@bratloveanu@gmail.com, telefon: 004 0722 557413  
 J25/110/2004 | RO16187070

**SC REAL REISE TRANSPORT SRL**

PROIECT NR. 94/2018

FAZA PUZ

PLANSĂ NR. U01-2

PLAN DE INCADRARE IN ZONA EXISTENT

